



Catalog Number GTX125932 **Package:** 25 µl, 100 µl

[Reference](#) (10)

Product Name Influenza A virus PA protein antibody

Product Description Rabbit Polyclonal antibody to Influenza A Virus PA

Host Rabbit

Clonality Polyclonal

Isotype IgG

Immunogen Recombinant fragment corresponding to N-terminal region of Influenza A virus PA (A/Puerto Rico/8/1934(H1N1)). The exact sequence is proprietary.

Antigen Species Influenza A virus (H1N1)

Species Reactivity Influenza A virus

Applications ICC/IF, WB, IB

Application Note

	Suggested dilution	Reference
Immunocytochemistry/ Immunofluorescence	1:100-1:1000*	
Western blot	1:1000-1:10000*	
Immunoblotting	Assay-dependent dilution	

Not tested in other applications.

*Optimal dilutions/concentrations should be determined by the researcher.

Positive Controls Influenza virus (A/WSN/1933(H1N1))-infected DF-1 cell lysates

Predicted Target Size 83 kDa

Conjugation Unconjugated

Form Supplied Liquid

Purification Purified by antigen-affinity chromatography.

Concentration 1 mg/ml (Please refer to the vial label for the specific concentration)

Storage Buffer 1XPBS, 20% Glycerol (pH7). 0.01% Thimerosal was added as a preservative.

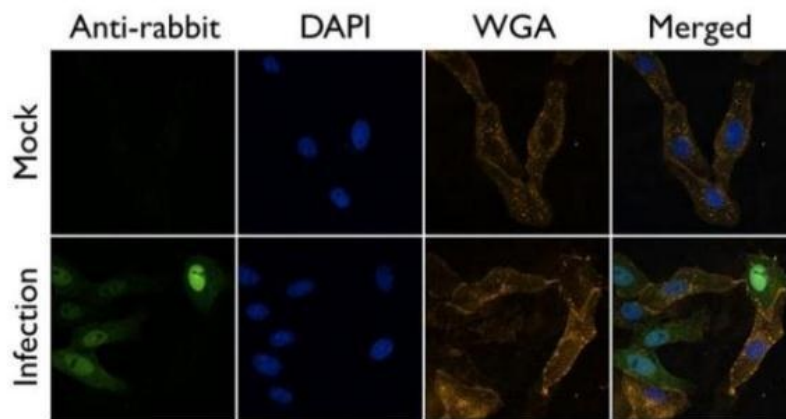
Storage Instruction Keep as concentrated solution. Aliquot and store at -20°C or below. Avoid multiple freeze-thaw cycles.

Notes For *In vitro* laboratory use only. Not for any clinical, therapeutic, or diagnostic use in humans or animals. Not for animal or human consumption.

ResearchArea [Infectious Disease](#) > [Virus](#) > [Influenza A Virus](#)

Application Reference

1. Wang L (2017) *Nat Commun* 13876
2. Kuo SM (2017) *MBio*
3. Xu G (2017) *Virology* 45-53
4. Sadewasser A (2017) *Mol Cell Proteomics*
5. Sun H (2015) *Sci Rep* 10130
6. Hu J (2016) *Med Microbiol Immunol*
7. Hu J (2016) *Med Microbiol Immunol* 381-95
8. Gao H (2015) *J Gen Virol* 2587-94
9. Wu NC (2015) *PLoS Genet* e1005310
10. Li W (2014) *J Virol*



GTX125932 ICC/IF Image

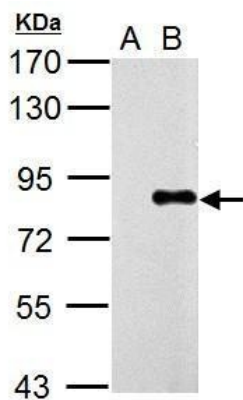
Influenza A Virus PA antibody detects PA protein at by immunofluorescent analysis.

Sample: A/WSN/33 infected Vero cells were fixed in 4% paraformaldehyde at RT for 20 min.

Green: PA protein stained by Influenza A Virus PA antibody (GTX125932) diluted at 1:500.

Blue: DAPI staining.

Yellow: WGA life stained at 37°C, 30 min.



GTX125932 WB Image

Sample (5 µg of whole cell lysate)

A: DF1

B: WSN virus infected DF1 10 hr

7.5% SDS PAGE

GTX125932 diluted at 1:5000

The HRP-conjugated anti-rabbit IgG antibody (GTX213110-01) was used to detect the primary antibody.